



June 2010

## Industry update

**Queensland has a rich endowment of high-quality coal resources, with more than 34 billion tonnes (raw coal in-situ) having been identified by drilling operations.**

**Identified resources of coking coal amount to approximately 8.7 billion tonnes, of which about 4 billion tonnes are suitable for open-cut mining.**

The Bowen Basin, which contains virtually all of the state's hard coking coal, is the most important source of export coal in Queensland. The Callide, Clarence Moreton, Tarong and Surat Basins are important sources of thermal coal for domestic power generation.

The Surat Basin, with its large resources of potentially open-cut thermal coal, continues to attract interest both nationally and internationally and is set to emerge as a major source of high-volatile thermal coal for export.

Large-scale open-cut mining is expected to commence in the Surat Basin in the region from Chinchilla north-west to Wandoan and Taroom within the next five years, subject to establishment of new rail and port infrastructure.

In addition, exploration for export thermal coal now includes a focus on the previously identified large deposits of shallow coal that occur along the eastern flank of the Galilee Basin in western central Queensland.

Four major thermal coal developments are proposed for the region north-west of Alpha, to be supported by a new railway and expanded port infrastructure at Abbot Point.

Queensland's world-class coal mines and infrastructure, including electrified rail links from the coalfields, allow efficient production and transport of coal to six coal-export terminals.

At these terminals, ships of up to 230 000 deadweight tonnes load export coal for distribution to the world market.

Queensland's saleable coal production in 2008–09 amounted to a total of 190.5 million tonnes (Mt).

Exports totalling 159.3 Mt worth A\$40.97 billion free-on-board were made to 37 countries. An additional 27 Mt, predominantly of thermal coal were supplied to domestic markets.

These exports comprised 109.6 Mt of metallurgical coal (coking coal used in iron and steel making and coal used for pulverised coal injection [PCI] into the blast furnace) and 49.7 Mt of thermal coal used for electricity generation and in industrial processes.

### Quick facts (2008–09)

#### Saleable coal production

Open-cut	159.7 Mt
Underground	30.8 PJ
<b>Total</b>	<b>190.5 Mt</b>

#### Coal exports

Metallurgical	109.6 Mt
Thermal	49.7 Mt
<b>Total</b>	<b>159.3 Mt</b>

#### Operating coal mines

Open-cut	41
Underground	13
<b>Total</b>	<b>54</b>

**Locality maps and contact details for operators of Queensland's coal mines and projects are on pages 2-7**  
For more information go to [www.deedi.qld.gov.au](http://www.deedi.qld.gov.au)

The Queensland coal industry continues to expand to meet growing world demand, particularly from Asia.

Throughout 2008–09 a shift in demand occurred as coal sales decreased to some traditional markets such as Europe, Japan and Brazil, but increased very markedly to China. Sales also increased to South Korea, Taiwan and India.

To help meet increasing demand from international buyers, the Queensland Government is working with the coal industry and private enterprise to facilitate mine expansions, the development of new coal mining projects and provision of adequate coal export infrastructure.

Information about the timing and expansion of Queensland's coal infrastructure is available from Queensland Transport's website: [www.transport.qld.gov.au/Home/Industry/Multi\\_modal/Coal\\_transport\\_infrastructure](http://www.transport.qld.gov.au/Home/Industry/Multi_modal/Coal_transport_infrastructure)

#### For further information contact:

Department of Employment, Economic Development and Innovation  
Geoscience Manager, Energy  
PO Box 15216, City East Queensland 4002 Australia  
**Telephone: +61 7 3362 9340**  
Facsimile: +61 7 3362 9343  
Email: [minerals@dme.qld.gov.au](mailto:minerals@dme.qld.gov.au)  
**[www.deedi.qld.gov.au](http://www.deedi.qld.gov.au)**

Note: Statistics quoted in this brochure compiled by the Department of Employment, Economic Development and Innovation, 2008–09.

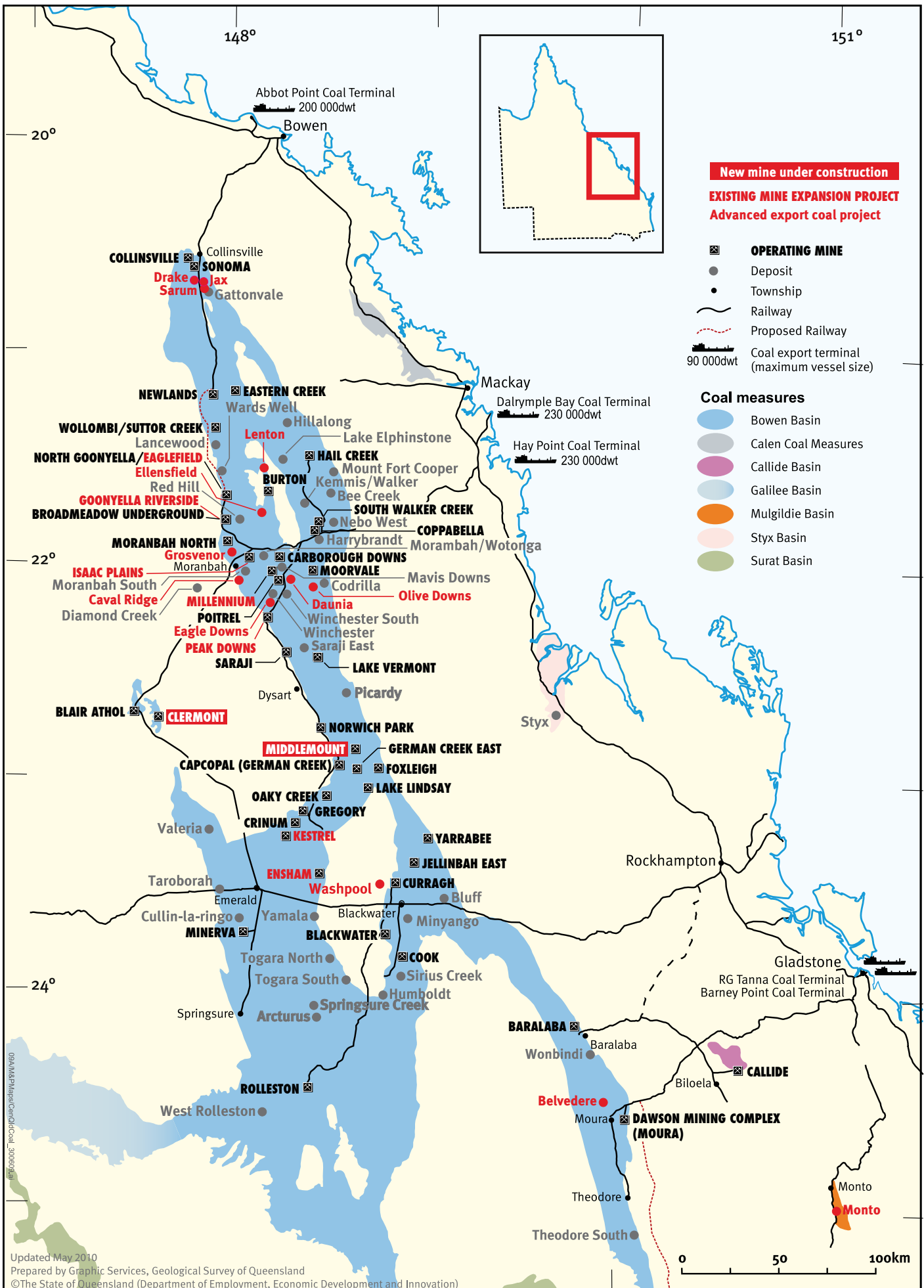
**Table 1: Queensland's coal – New coal mines under construction in 2009–10**

Name	Resource Mt	Coal type	Project overview	Principal contact
<b>Cameby Downs</b> Surat Basin	100–500	●	Open-cut mine – 1.4 Mt/a for export via Brisbane <a href="http://www.syntechresources.com.au">www.syntechresources.com.au</a>	<b>Syntech Resources Pty Ltd</b> ph: +61 7 3232 3800 fx: +61 7 3232 3895
<b>Clermont</b> (To progressively replace Blair Athol Mine) Bowen Basin	100–500	●	Open-cut mine – 12.2 Mt/a first began coal in 2010 <a href="http://www.riotintocoalaustralia.com.au">www.riotintocoalaustralia.com.au</a>	<b>Rio Tinto Coal Australia Pty Limited</b> ph: +61 7 3361 4200 fx: +61 7 3361 4370
<b>Kestrel Mine Extension</b> Bowen Basin	100–500	●	Underground longwall – extend mine to beyond 2030 <a href="http://www.riotintocoalaustralia.com.au">www.riotintocoalaustralia.com.au</a>	<b>Rio Tinto Coal Australia Pty Limited</b> ph: +61 7 3361 4200 fx: +61 7 3361 4370
<b>Middlemount</b> Bowen Basin	10–100	● ●	Open-cut mine – up to 2 Mt/a for export <a href="http://www.macarthurcoal.com.au">www.macarthurcoal.com.au</a>	<b>Macarthur Coal Limited</b> ph: +61 7 3221 7210 fx: +61 7 3229 1776

**Table 2: Queensland's coal – Advanced export coal projects in 2009–10** (Mining Lease either granted or under application)

Name	Resource Mt	Coal type	Project overview	Principal contact
<b>Alpha</b> Galilee Basin	>1000	●	Open-cut and underground longwall mines – 30 Mt/a <a href="http://www.hancockcoal.com.au">www.hancockcoal.com.au</a>	<b>Hancock Coal Pty Ltd</b> ph: +61 7 3231 9600 fx: +61 7 3229 4788
<b>Belvedere</b> Bowen Basin	100–500	● ●	Underground mine – n/a <a href="http://www.vale.com">www.vale.com</a>	<b>Vale Australia Pty Ltd</b> ph: +61 7 3136 0500 fx: +61 7 3136 0510
<b>Cameby Downs Mine expansion</b> Surat Basin	100–500	●	Open-cut mine – up to 1.4 Mt/a to 10+ Mt/a <a href="http://www.syntechresources.com.au">www.syntechresources.com.au</a>	<b>Syntech Resources Pty Ltd</b> ph: +61 7 3232 3800 fx: +61 7 3232 3895
<b>Caval Ridge</b> Bowen Basin (part of Bowen Basin Coal Growth Project)	100–500	●	Open-cut mine – 5.5 Mt/a <a href="http://www.bhpbilliton.com">www.bhpbilliton.com</a>	<b>BHP Billiton Mitsubishi Alliance</b> ph: +61 7 3226 0600 fx: +61 7 3229 2575
<b>Colton</b> Maryborough Basin	10–100	●	Open-cut mine – 0.5 Mt/a <a href="http://www.northernenergy.com.au">www.northernenergy.com.au</a>	<b>Northern Energy Corporation Limited</b> ph: +61 7 3136 0500 fx: +61 7 3136 0510
<b>Daunia</b> Bowen Basin (part of Bowen Basin Coal Growth Project)	10–100	● ●	Open-cut mine – up to 4 Mt/a <a href="http://www.bhpbilliton.com">www.bhpbilliton.com</a>	<b>BHP Billiton Mitsubishi Alliance</b> ph: +61 7 3226 0600 fx: +61 7 3229 2575
<b>Drake</b> Bowen Basin	10–100	●	Open-cut mine – up to 6 Mt/a <a href="http://www.qcoal.com.au">www.qcoal.com.au</a>	<b>Drake Coal Pty Ltd</b> ph: +61 7 3002 2900 fx: +61 7 3002 2999
<b>Eagle Downs</b> Bowen Basin	100–500	●	Underground mine – up to 7 Mt/a <a href="http://www.vale.com">www.vale.com</a>	<b>Vale Australia Pty Ltd</b> ph: +61 7 3136 0500 fx: +61 7 3136 0510
<b>Eaglefield Mine expansion</b> Bowen Basin	100–500	●	Open-cut mine – up to 10 Mt/a, includes North Goonyella underground <a href="http://www.peabodyenergy.co.au">www.peabodyenergy.co.au</a>	<b>Peabody Energy Australia Coal Pty Ltd</b> ph: +61 7 3225 5500 fx: +61 7 3225 5555
<b>Ellensfield</b> Bowen Basin	10–100	● ●	Underground mine – up to 4.7 Mt/a <a href="http://www.vale.com">www.vale.com</a>	<b>Vale Australia Pty Ltd</b> ph: +61 7 3136 0500 fx: +61 7 3136 0510
<b>Elimatta</b> Surat Basin	100–500	●	Open-cut mine – up to 5 Mt/a <a href="http://www.northernenergy.com.au">www.northernenergy.com.au</a>	<b>Northern Energy Corporation Limited</b> ph: +61 7 3303 0695 fx: +61 7 3303 0601
<b>Ensham Underground</b> Bowen Basin	100–500	●	Bord and pillar and longwall underground mines – about 7 Mt/a <a href="http://www.ensham.com.au">www.ensham.com.au</a>	<b>Ensham Resources Pty Ltd</b> ph: +61 7 3221 1201 fx: +61 7 3221 1225
<b>Goonyella Riverside Mine expansion</b> Bowen Basin (part of Bowen Basin Coal Growth Project)	100–500	●	Open-cut and underground mines – increase by 8 Mt/a <a href="http://www.bhpbilliton.com">www.bhpbilliton.com</a>	<b>BHP Billiton Mitsubishi Alliance</b> ph: +61 7 3226 0600 fx: +61 7 3229 2575
<b>Grosvenor</b> Bowen Basin	100–500	●	Underground mine to produce up to 4.5 Mt/a <a href="http://www.anglocoal.com.au">www.anglocoal.com.au</a>	<b>Anglo American Metallurgical Coal Pty Ltd</b> ph: +61 7 3834 1333 fx: +61 7 3834 1390
<b>Integrated Isaac Plains Project</b> Bowen Basin	10–100	●	Open-cut mine – expand Isaac Plains Mine to 4 Mt/a <a href="http://www.vale.com">www.vale.com</a>	<b>Vale Australia Pty Ltd</b> ph: +61 7 3136 0500 fx: +61 7 3136 0510
<b>Jax</b> Bowen Basin	10–100	●	Open-cut mine – 1.8 Mt/a raw coal <a href="http://www.qcoal.com.au">www.qcoal.com.au</a>	<b>QCoal Pty Ltd</b> ph: +61 7 3002 2900 fx: +61 7 3002 2999
<b>Kevin's Corner</b> Galilee Basin	500–1000	●	Underground longwall and open-cut mines – 30 Mt/a <a href="http://www.hancockcoal.com.au">www.hancockcoal.com.au</a>	<b>Hancock Coal Pty Ltd</b> ph: +61 7 3231 9600 fx: +61 7 3229 4788
<b>Lenton</b> Bowen Basin	10–100	●	Open-cut mine – exploration/feasibility studies continue <a href="http://www.newhopecoal.com">www.newhopecoal.com</a>	<b>New Hope Corporation Limited</b> ph: +61 7 3418 0500 fx: +61 7 3418 0355
<b>Middlemount Mine expansion</b> Bowen Basin	10–100	● ●	Open-cut mine expansion – from 2 Mt/a to about 4 Mt/a <a href="http://www.macarthurcoal.com.au">www.macarthurcoal.com.au</a>	<b>Macarthur Coal Limited</b> ph: +61 7 3221 7210 fx: +61 7 3229 1776
<b>Millennium Mine expansion</b> Bowen Basin	100–500	● ●	Open-cut mine – 4 Mt/a <a href="http://www.peabodyenergy.com.au">www.peabodyenergy.com.au</a>	<b>Peabody Energy Australia Coal Pty Ltd</b> ph: +61 7 3225 5500 fx: +61 7 3225 5500
<b>Monto Project</b> Mulgildie Basin	100–500	●	Open-cut mine – about 1 Mt/a to about 1.5 Mt/a <a href="http://www.macarthurcoal.com.au">www.macarthurcoal.com.au</a>	<b>Macarthur Coal Limited</b> ph: +61 7 3221 7210 fx: +61 7 3229 1776
<b>New Acland Mine expansion</b> Clarence Moreton Basin	500–1000	●	Open-cut mine – expansion 4.8 Mt/a to 10 Mt/a <a href="http://www.newhopecoal.com">www.newhopecoal.com</a>	<b>New Hope Corporation Limited</b> ph: +61 7 3418 0500 fx: +61 7 3418 0355
<b>Olive Downs</b> Bowen Basin	10–100	● ●	Open-cut mine expansion – up to 2 Mt/a <a href="http://www.macarthurcoal.com.au">www.macarthurcoal.com.au</a>	<b>Macarthur Coal Limited</b> ph: +61 7 3221 7210 fx: +61 7 3229 1776
<b>Peak Downs Mine expansion</b> Bowen Basin (part of Bowen Basin Coal Growth Project)	>1000	●	Open-cut mine – plus 2.5 Mt/a saleable coal <a href="http://www.bhpbilliton.com">www.bhpbilliton.com</a>	<b>BHP Billiton Mitsubishi Alliance</b> ph: +61 7 3226 0600 fx: +61 7 3229 2575
<b>Sarum</b> Bowen Basin	100–500	● ●	Open-cut and underground mines – preliminary feasibility studies continuing <a href="http://www.xstrata.com.au">www.xstrata.com.au</a>	<b>Xstrata Coal Queensland Pty Ltd</b> ph: +61 7 3115 5300 fx: +61 7 3115 5412
<b>Wandoan Group</b> Surat Basin	>1000	●	Open-cut mine – 22 Mt/a saleable coal feasibility studies to be completed by mid 2010 <a href="http://www.xstrata.com.au">www.xstrata.com.au</a>	<b>Xstrata Coal Queensland Pty Ltd</b> ph: +61 7 3115 5300 fx: +61 7 3115 5412
<b>Washpool</b> Bowen Basin	10–100	●	Open-cut mine – up to 2 Mt/a product coal feasibility studies continuing <a href="http://www.aquilaresources.com.au">www.aquilaresources.com.au</a>	<b>Aquila Resources Limited</b> ph: +61 8 9423 0111 fx: +61 9 9423 0133
<b>Woori (Guluguba)</b> Surat Basin	10–100	●	Open-cut mine – to produce 4 Mt/a saleable coal <a href="http://www.cockatoo.com.au">www.cockatoo.com.au</a>	<b>Cockatoo Coal Limited</b> ph: +61 2 9300 3333 fx: +61 2 9221 6333

Figure 1: Queensland's coal – Central Queensland map



**Figure 2: Queensland's coal – Western-central Queensland map**

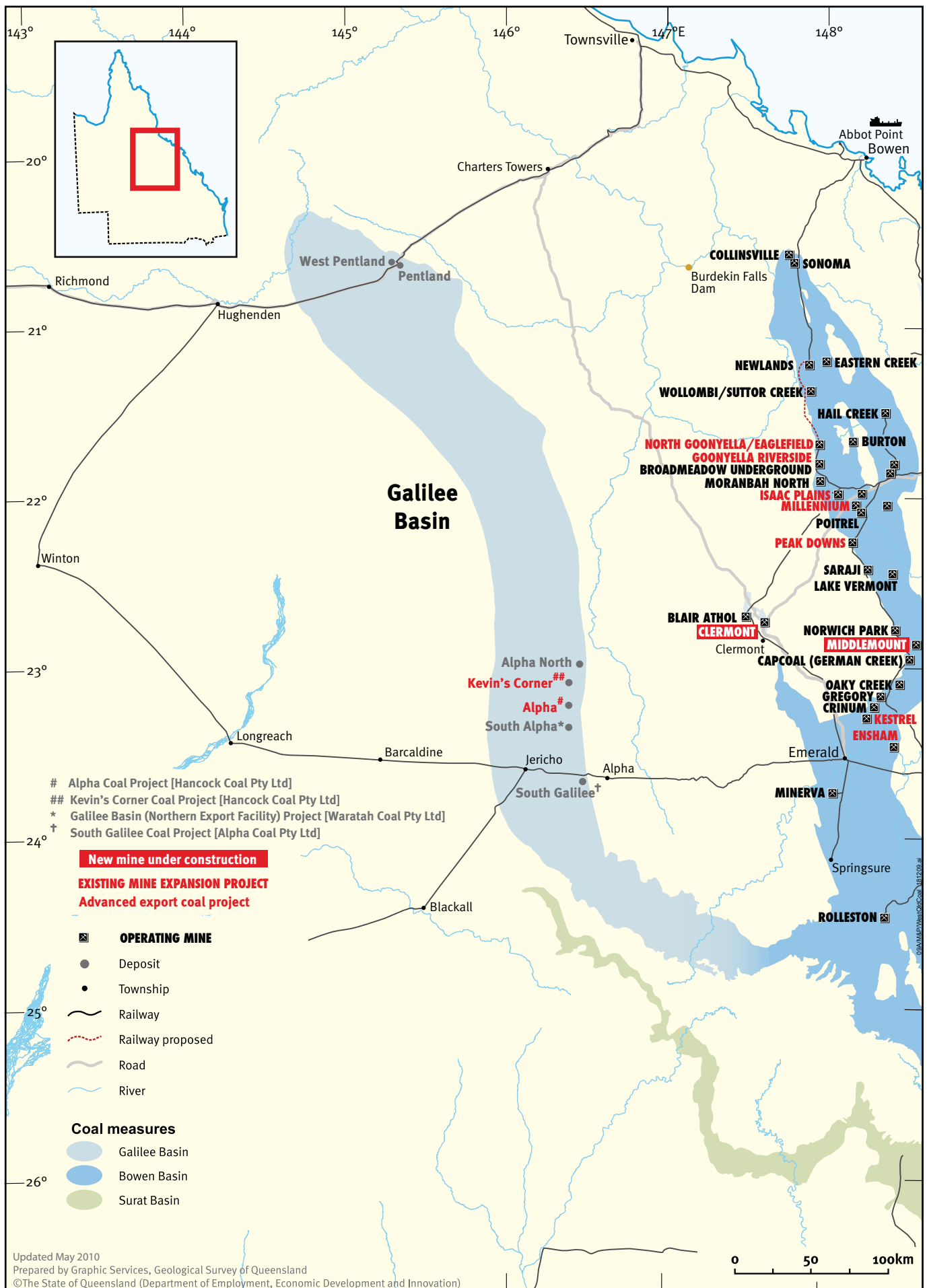
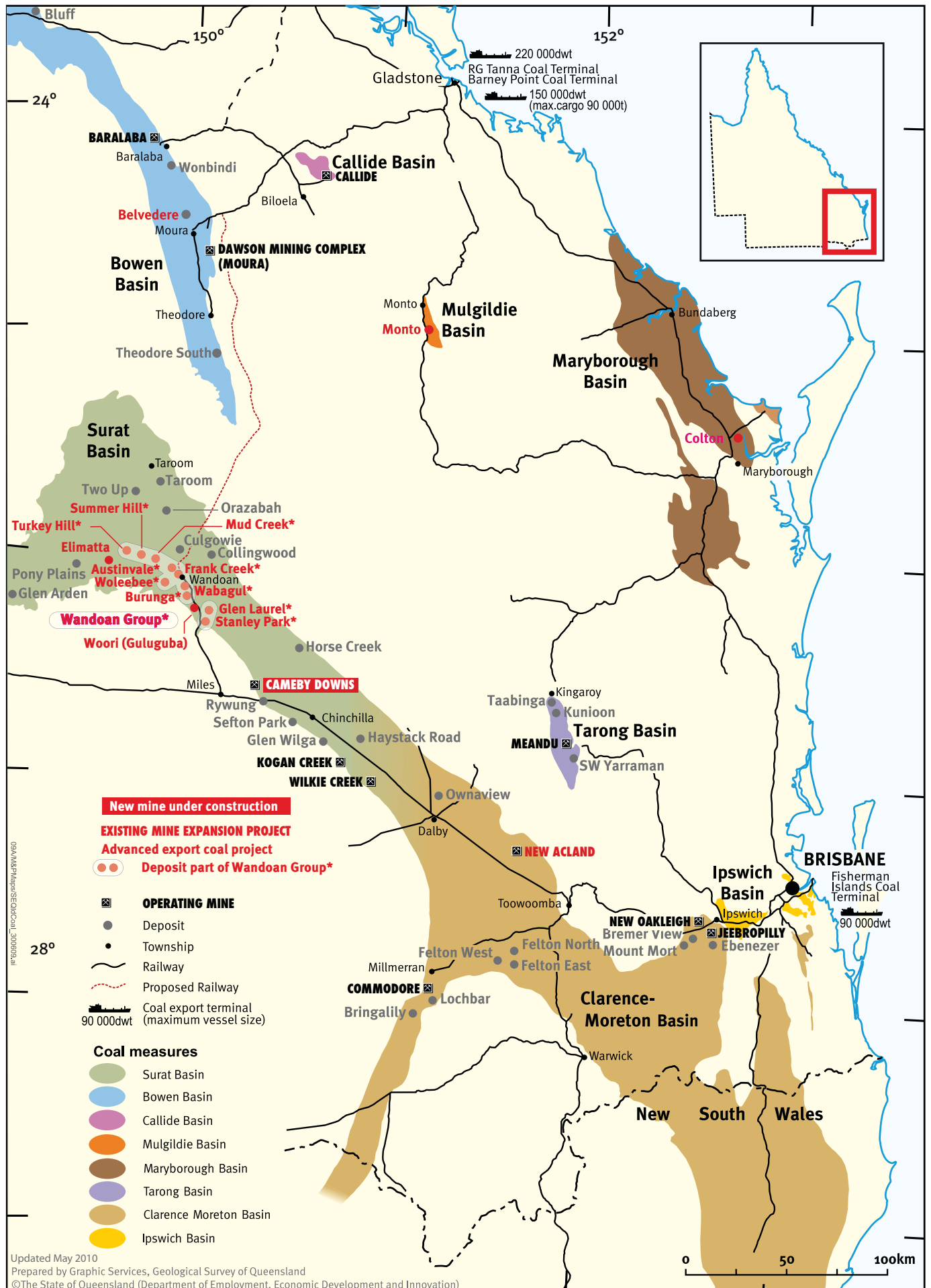


Figure 3: Queensland's coal – South-east Queensland map



Updated May 2010  
 Prepared by Graphic Services, Geological Survey of Queensland  
 ©The State of Queensland (Department of Employment, Economic Development and Innovation)



**Table 3 : Queensland's coal – Operating mines and saleable production 2008–09 continued**

Name	Saleable (t) 2008–09	Coal type	Parent company	Principal contact
<b>• Peabody Energy Australia Pty Ltd</b>				
<b>Baralaba</b> Bowen Basin	390 430	● ●	Peabody Energy Australia Pty Ltd <a href="http://www.peabodyenergy.com.au">www.peabodyenergy.com.au</a>	<b>Baralaba Coal Pty Ltd</b> ph: +61 7 4998 1592    fx: +61 7 3319 6589
<b>Burton</b> Bowen Basin	2 244 727	● ●	Peabody Energy Australia Pty Ltd <a href="http://www.peabodyenergy.com.au">www.peabodyenergy.com.au</a>	<b>Burton Coal Pty Ltd</b> ph: +61 7 4940 5555    fx: +61 7 4940 5561
<b>Millennium</b> Bowen Basin	788 323	● ●	Peabody Energy Australia Pty Ltd <a href="http://www.peabodyenergy.com.au">www.peabodyenergy.com.au</a>	<b>Millennium Mine</b> ph: +61 7 4950 7068    fx: +61 7 3251 0849
<b>North Goonyella*, Eaglefield</b> Bowen Basin	1 866 994	● ●	Peabody Energy Australia Pty Ltd <a href="http://www.peabodyenergy.com.au">www.peabodyenergy.com.au</a>	<b>North Goonyella Coal Properties Pty Ltd</b> ph: +61 7 4949 2888    fx: +61 7 4949 2811
<b>Wilkie Creek</b> Surat Basin	2 319 843	● ●	Peabody Energy Australia Pty Ltd <a href="http://www.peabodyenergy.com.au">www.peabodyenergy.com.au</a>	<b>Peabody Wilkie Creek Pty Ltd</b> ph: +61 7 4663 5555    fx: +61 7 4663 5549
<b>• Rio Tinto Coal Australia Pty Limited</b>				
<b>Blair Athol</b> Bowen Basin	10 985 406	● ●	Rio Tinto Coal Australia Pty Limited <a href="http://www.riotintocoalaustralia.com">www.riotintocoalaustralia.com</a>	<b>Blair Athol Mine Joint Venture</b> ph: +61 7 4980 2444    fx: +61 7 4980 2383
<b>Hail Creek</b> Bowen Basin	6 136 658	● ●	Rio Tinto Coal Australia Pty Limited <a href="http://www.riotintocoalaustralia.com">www.riotintocoalaustralia.com</a>	<b>Hail Creek Mine</b> ph: +61 7 4940 5711    fx: +61 7 4940 5058
<b>Kestrel*</b> Bowen Basin	4 325 657	● ●	Rio Tinto Coal Australia Pty Limited <a href="http://www.riotintocoalaustralia.com">www.riotintocoalaustralia.com</a>	<b>Kestrel Mine Joint Venture</b> ph: +61 7 4984 7500    fx: +61 7 4984 7577
<b>• Vale Australia Pty Limited</b>				
<b>Broadlea</b> Bowen Basin	878 178	● ●	Vale Australia Pty Ltd <a href="http://www.vale.com">www.vale.com</a>	<b>Broadlea Mine</b> ph: +61 7 1300 883 234    fx: +61 7 3503 9378
<b>Carborough Downs*</b> Bowen Basin	543 888	● ●	Vale Australia Pty Ltd <a href="http://www.vale.com">www.vale.com</a>	<b>Carborough Downs Mine</b> ph: +61 7 4958 0800    fx: +61 7 4958 0821
<b>Isaac Plains</b> Bowen Basin	1 849 093	● ●	Vale Australia Pty Ltd <a href="http://www.vale.com">www.vale.com</a>	<b>Isaac Plains Mine</b> ph: +61 7 4958 0888    fx: +61 7 4958 0880
<b>• Xstrata Coal Queensland Pty Ltd</b>				
<b>Collinsville</b> Bowen Basin	3 538 419	● ●	Xstrata Coal Queensland Pty Ltd <a href="http://www.xstrata.com">www.xstrata.com</a>	<b>Collinsville Coal Company Pty Ltd</b> ph: +61 7 4785 4600    fx: +61 7 4785 4650
<b>Newlands</b> Bowen Basin – Northern*, Wollombi, Eastern Creek, Suttor Creek mines	8 772 206	● ●	Xstrata Coal Queensland Pty Ltd <a href="http://www.xstrata.com">www.xstrata.com</a>	<b>Newlands Coal Pty Ltd</b> ph: +61 7 4940 5200    fx: +61 7 4940 5211
<b>Oaky Creek</b> Bowen Basin – Oaky Creek No.1*, Oaky North* mines	5 564 000	● ●	Xstrata Coal Queensland Pty Ltd <a href="http://www.xstrata.com">www.xstrata.com</a>	<b>Oaky Creek Coal Pty Ltd</b> ph: +61 7 4984 7200    fx: +61 7 4984 7240
<b>Rolleston</b> Bowen Basin	7 232 411	● ●	Xstrata Coal Queensland Pty Ltd <a href="http://www.xstrata.com">www.xstrata.com</a>	<b>Rolleston Mine</b> ph: +61 7 4988 9100    fx: +61 7 4988 9151
<b>• Other companies operating coal mines in Queensland</b>				
<b>Commodore</b> Clarence Moreton Basin	3 507 834	● ●	Millmerran Operating Company Pty Ltd <a href="http://www.intergen.com">www.intergen.com</a>	<b>Downer EDI Mining Pty Ltd</b> (mine contractor) ph: +61 7 3026 6666    fx: +61 7 3026 6060
<b>Cook*</b> Bowen Basin	514 991	● ●	Caledon Coal Pty Ltd <a href="http://www.caledonresources.com">www.caledonresources.com</a>	<b>Cook Mine</b> ph: +61 7 4986 1600    fx: +61 7 4986 1655
<b>Curragh</b> Bowen Basin	9 452 118	● ●	Wesfarmers Resources Limited <a href="http://www.wesresources.com.au">www.wesresources.com.au</a>	<b>Curragh Mine</b> ph: +61 7 4986 9211    fx: +61 7 4986 1649
<b>Ensham</b> Bowen Basin	6 533 591	● ●	Ensham Resources Pty Ltd <a href="http://www.ensham.com.au">www.ensham.com.au</a>	<b>Ensham Mine</b> ph: +61 7 4987 3601    fx: +61 7 4987 3622
<b>Jellinbah East</b> Bowen Basin	4 348 237	● ●	Jellinbah Mining Pty Ltd <a href="http://www.jellinbah.com.au">www.jellinbah.com.au</a>	<b>Jellinbah East Mine</b> ph: +61 7 4980 1000    fx: +61 4980 1019
<b>Kogan Creek</b> Surat Basin	2 405 872	● ●	CS Energy Ltd <a href="http://www.csenergy.com.au">www.csenergy.com.au</a>	<b>Golding Contractors Pty Ltd</b> (mine contractor) ph: +61 7 3510 3400    fx: +61 7 3510 3451
<b>Lake Vermont (2)</b> Bowen Basin	1 179 517	● ●	Jellinbah Resources Pty Ltd <a href="http://www.jellinbah.com.au">www.jellinbah.com.au</a>	<b>Lake Vermont Coal Project Joint Venture</b> ph: +61 7 3877 6700    fx: +61 7 3221 7119
<b>Meandu</b> Tarong Basin	4 982 037	● ●	Tarong Energy Limited <a href="http://www.tarongenergy.com.au">www.tarongenergy.com.au</a>	<b>Thiess Pty Ltd</b> (mine contractor) ph: +61 7 3121 8500    fx: +61 7 3121 8750
<b>Sonoma</b> Bowen Basin	2 750 259	● ●	QCoal Pty Ltd <a href="http://www.qcoal.com.au">www.qcoal.com.au</a>	<b>Sonoma Mine Management Pty Ltd</b> ph: +61 7 3226 7400    fx: +61 7 3226 7444

## Coal Exploration and Mining Tenures in Queensland

All exploration and mining tenures are issued and administered by the Queensland Department of Employment, Economic Development and Innovation (DEEDI), a part of the Queensland Government, under the provisions of the *Mineral Resources Act 1989* and the associated *Mineral Resources Regulation 2003*. Coal mining is administered under the provisions of the *Coal Mining Safety and Health Act 1999* and the associated *Coal Mining Safety and Health Regulation 2001*.

The three main tenures that are issued in Queensland for coal exploration and development as listed below:

### 1. Exploration Permit for Coal (EPC)

An EPC allows the holder to conduct coal exploration activities including geological mapping, exploration drilling and sampling (term up to 5 years and renewable according to performance).

### 2. Mineral Development Licence (MDL)

A MDL may be granted after exploration has proven, to a high level of knowledge, the existence of a resource. This tenure allows the holder to retain control of the resources within the defined area and conduct further testing and bulk sampling as approved by the government (term up to 5 years and renewable according to performance).

### 3. Mining Lease (ML)

A ML allows mining for a specified term, generally up to about 35 years commensurate with the proposed scale of mining and the size of the known resource, and is renewable.

## Interactive Resources and Tenures Maps

Land in Queensland that is subject to or available for applications for coal, mineral and petroleum exploration, development and production titles, may be identified graphically by using the DEEDI web-based Interactive Resource and Tenure Maps (IRTM) system (Diagram 1).

This system allows the user to zoom, pan, search and display geological data with mining and exploration tenure information for the whole of the State of Queensland. Data are updated daily and automatically displays onscreen.

## Queensland Digital Exploration Reports

The system also provides a spatial search tool to access historical open-file company exploration reports on the Queensland Digital Exploration Reports system (QDEX).

## Getting started

A map of Queensland will automatically appear on the screen. A set of tools, located on the screen above the map, allows the user to interrogate various layers which may be selected from a series of options as listed on the left side of the screen.

The user can interact with this map image using the tools (e.g. to zoom-in or identify features) and layers to display the chosen spatial information. A guide to operate the system is available via the HELP button in the tool bar at the top of the map.

## Further information:

IRTM support phone: +61 7 3896 9875

Email: [geological\\_info@dme.qld.gov.au](mailto:geological_info@dme.qld.gov.au)

IRTM website: [www.dme.qld.gov.au/mines/tenure\\_maps.cfm](http://www.dme.qld.gov.au/mines/tenure_maps.cfm)

Mining tenures: [www.dme.qld.gov.au/mines/land\\_tenure.cfm](http://www.dme.qld.gov.au/mines/land_tenure.cfm)

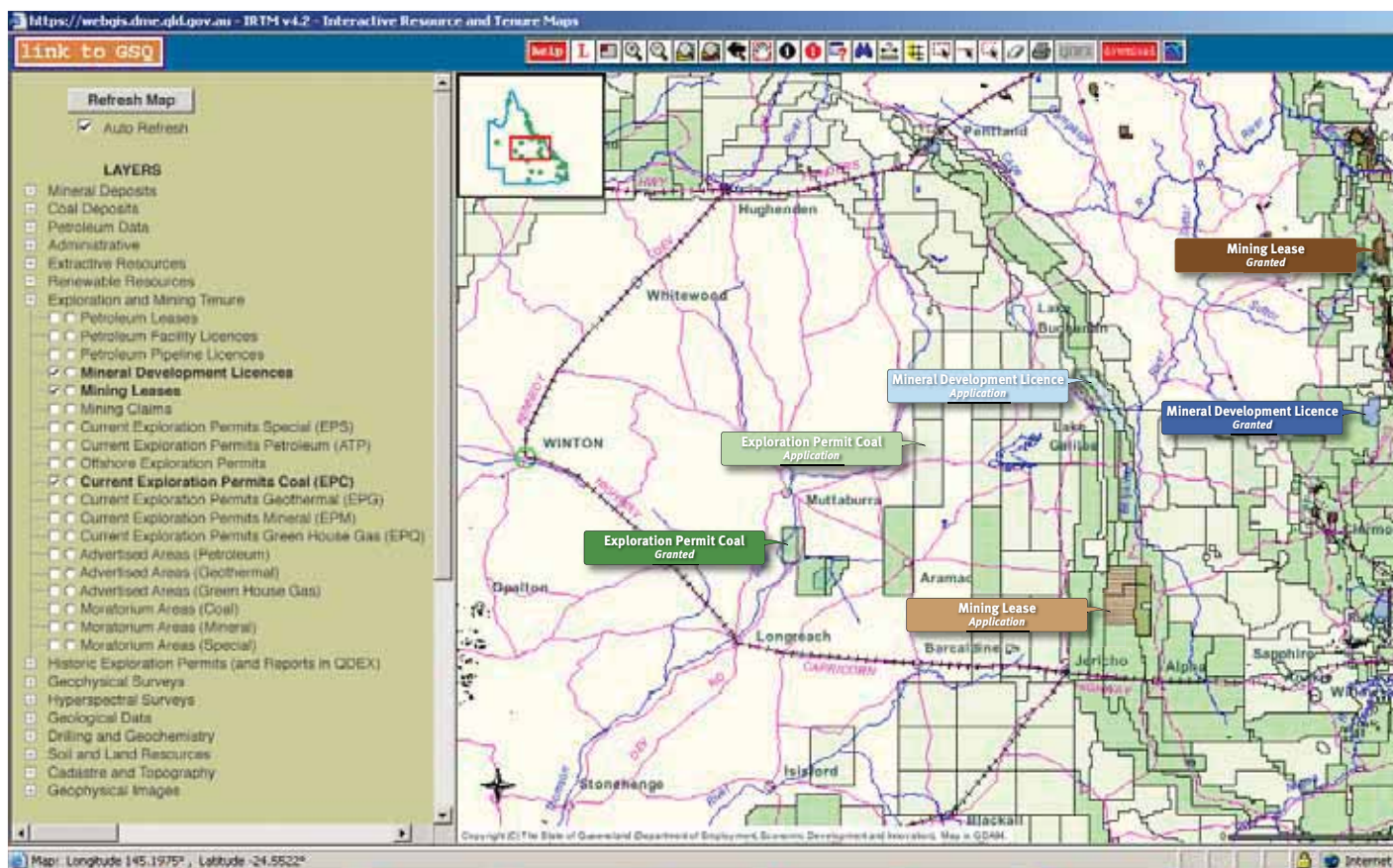


Diagram 1: IRTM screen image showing coal exploration and mining tenures in parts of the Galilee Basin and western Bowen Basin (12 May 2010)